

دبي  
Knowledge المعرفة

# FROM NOW TO NEXT

THE LAST 10 YEARS OF  
PRIVATE EDUCATION IN  
DUBAI - AND BEYOND

Dubai Private Education Landscape  
2016/2017



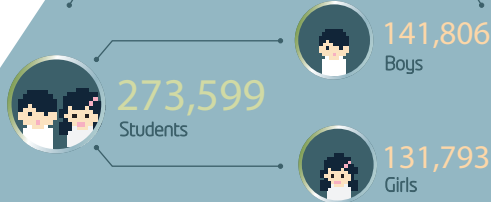
[www.khda.gov.ae](http://www.khda.gov.ae)

[facebook.com/KHDAOfficial](https://www.facebook.com/KHDAOfficial)

[@KHDADUBAI](https://www.instagram.com/KHDADUBAI)

[@KHDA](https://twitter.com/KHDA)

## STUDENTS



## SCHOOLS

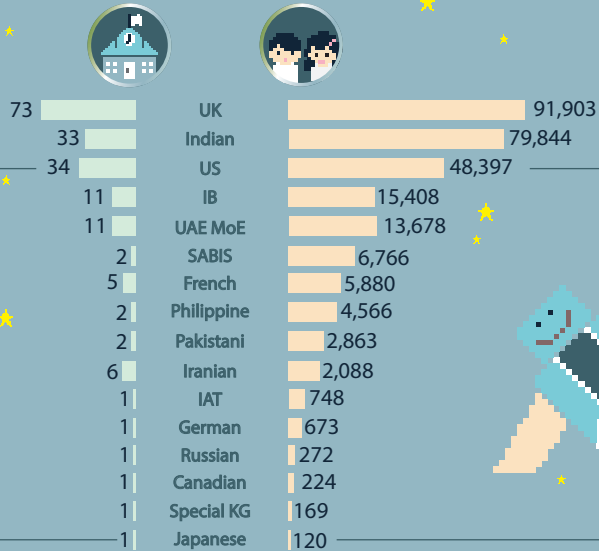


## NEW SCHOOLS



## SCHOOLS by curriculum type

## STUDENTS by curriculum type





88.6%

School Capacity  
(Capacity Utilisation Rate)



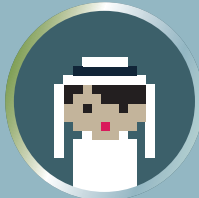
35,213

Available seats



3.1%

Enrolment growth  
in 2016/17

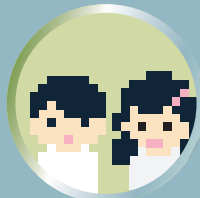
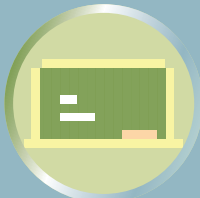


32,103

Emirati students  
in schools

11,295

Overall number  
of classes

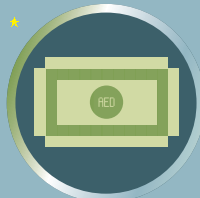


20%

of students new to  
Dubai in 2016/17

6.8 billion AED

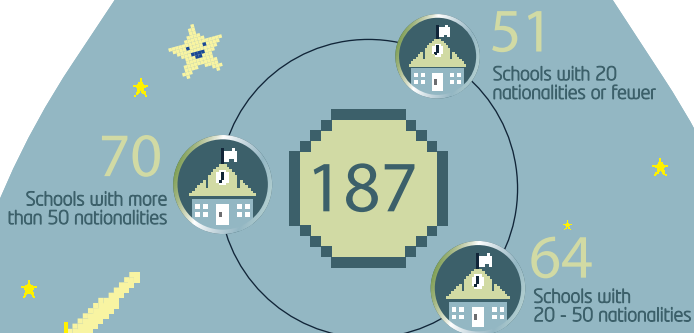
Tuition fees annual revenue



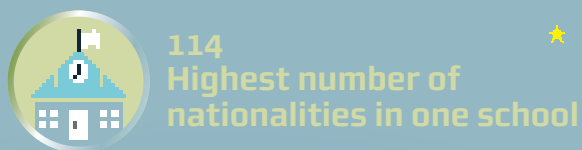
57.5%

of students pay less than  
20K AED in tuition fees per year

## NATIONALITIES

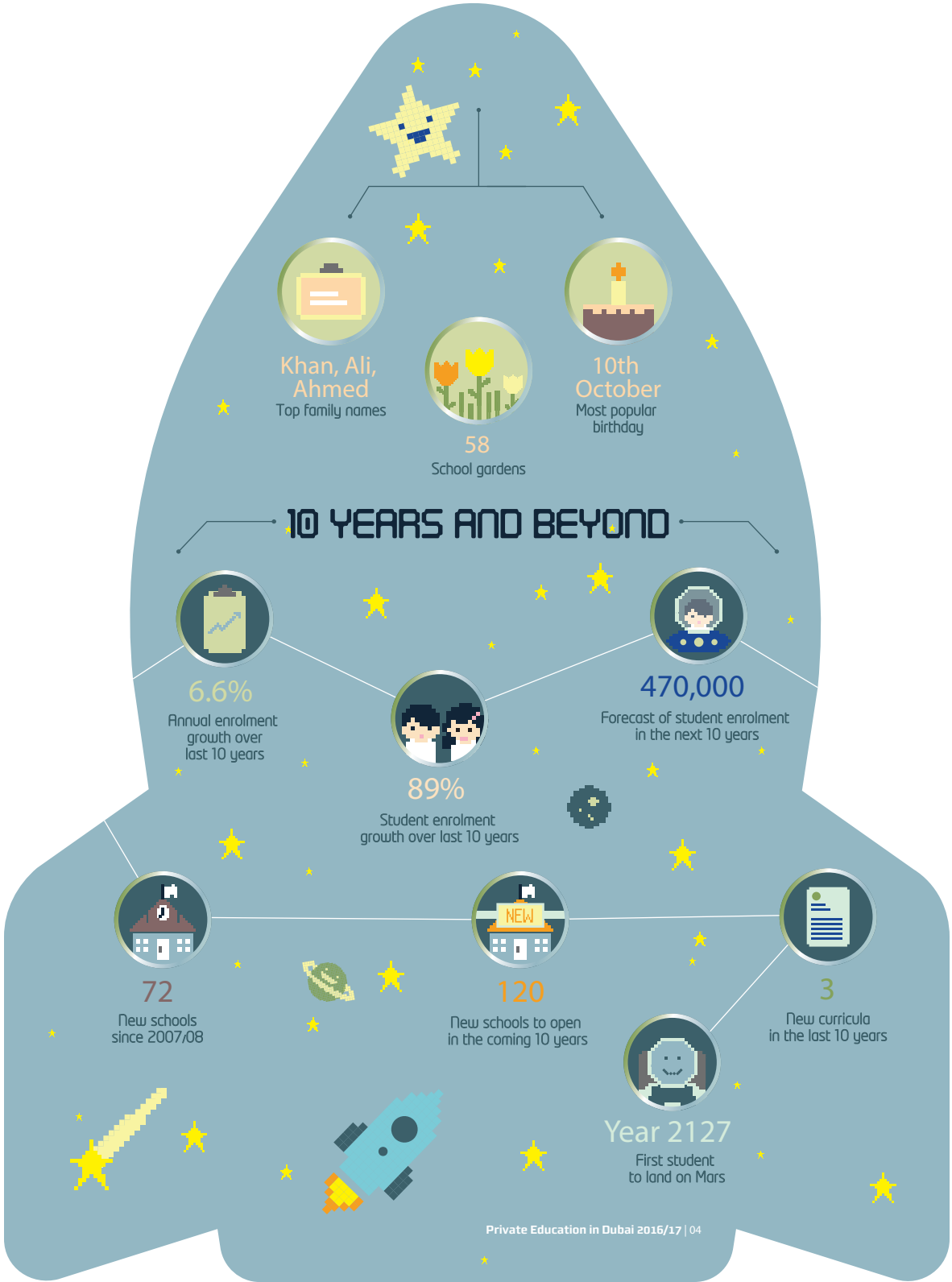


## SCHOOL WITH THE MOST NATIONALITIES

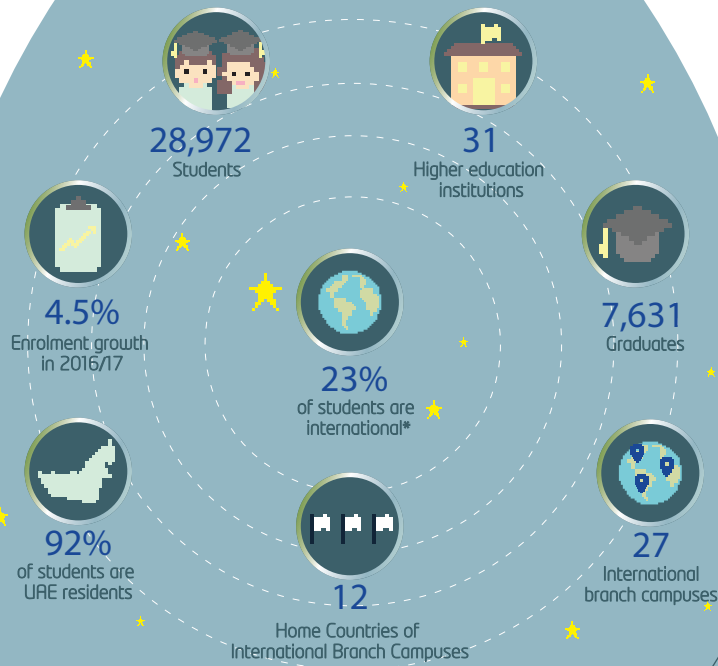


## NUMBER OF STUDENTS BY NATIONALITIES IN SCHOOLS - TOP 5

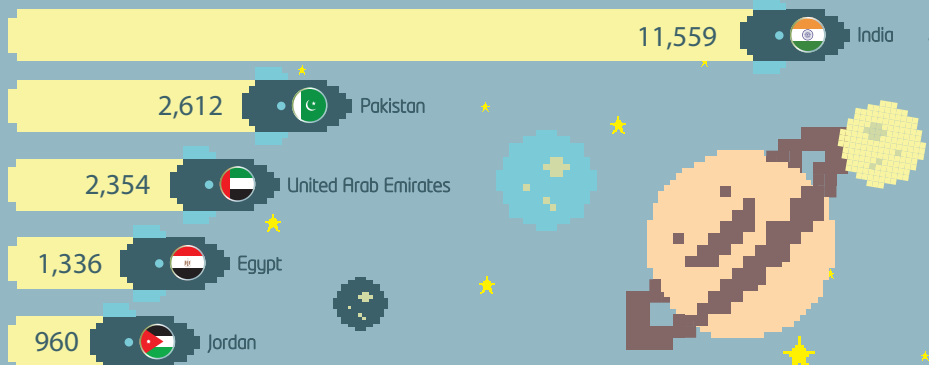




## HIGHER EDUCATION IN FREE ZONES



## NUMBER OF STUDENTS BY NATIONALITIES IN HIGHER EDUCATION - TOP 5

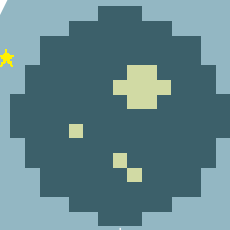


Private Education in Dubai 2016/17 | 05

\*International students are those that come to Dubai specifically for higher education purposes.



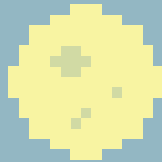
## HIGHER EDUCATION ENROLMENT



Bachelors  
60.3%



Foundation  
3.5%



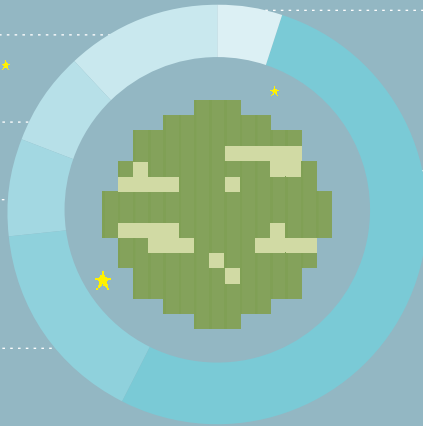
Masters  
30.7%



Higher Diploma  
3.1%



Others  
2.5%



11.7% Others

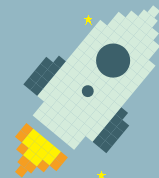
7.3% Media & Design

7.6% Information Technology

15.7% Engineering

Architecture & Construction 5.1%

Business 52.7%



# HIGHER EDUCATION GRADUATES

48.9%



Bachelors

47.8%



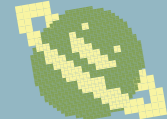
Masters

3.3%



Others

59%



6.2%



Architecture & Construction

Business

14.8%



Engineering

Information Technology

6.1%



Media & Design

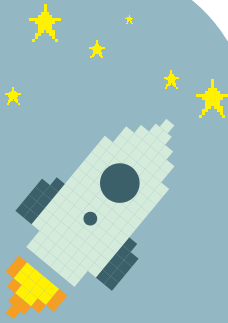
6.9%



Others

7%

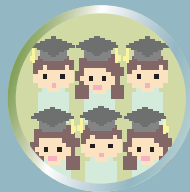




## HIGHER EDUCATION GROWTH IN LAST 6 YEARS



**9.6%**  
Annual  
Enrolment Growth

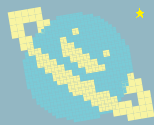


**73%**  
Student  
Enrolment Growth

## TRAINING INSTITUTES



**1,249**  
Training institutes



**45,427**  
Courses offered

