



INSPECTION SUMMARY REPORT

Parent Edition | 2023-2024

AL EMAN EDUCATIONAL EST

MINISTRY OF EDUCATION (MOE)

ACCEPTABLE

AL EMAN EDUCATIONAL EST
MINISTRY OF EDUCATION (MOE)

Inspection Dates
09 - 13 October 2023

Principal
Khaled Mohamed Kamel Massoud

LEARN MORE ABOUT THE SCHOOL

LEARN MORE ABOUT THE SCHOOL FEES

394 Students

17 Emirati Students

15 Students of Determination

35 Teachers

6 Teaching Assistants

4 Guidance counsellors

OVERALL SCHOOL PERFORMANCE

ACCEPTABLE

OUTSTANDING	Quality of performance substantially exceeds the expectation of the UAE
VERY GOOD	Quality of performance exceeds the expectation of the UAE
GOOD	Quality of performance meets the expectation of the UAE (This is the expected level for every school in the UAE)
ACCEPTABLE	Quality of performance meets the minimum level of quality required in the UAE
WEAK	Quality of performance is below the expectation of the UAE
VERY WEAK	Quality of performance is significantly below the expectation of the UAE

WHAT ARE THE SCHOOLS' HIGHLIGHTS AND POINTS TO IMPROVE?

SCHOOLS HIGHLIGHTS

- The good achievements in Islamic education, Arabic language, and science.
- The students' strong personal developments and their understanding of their own cultures
- Leaders' strong provision of health and safety and partnerships with parents

POINTS TO IMPROVE

- Accelerate students' progress by raising the expectations and offering more consistent opportunities for independent learning
- Improve teaching for effective learning by identifying and sharing best practice in the school, adjusting teaching to meet the needs of different students and promoting the development of skills of enquiry and critical thinking
- Ensure that teachers use the internal and external assessment information to plan and match tasks to the students' differing starting points and involving them more in assessing their own learning
- Develop the capacity of all staff with leadership roles by providing excellent professional learning opportunities

WELLBEING

THE OVERALL JUDGEMENT OF WELLBEING IS ACCEPTABLE



The school maintains a caring and supportive family-like atmosphere and prides itself on ensuring that students are safe and happy. Leaders pursue a strong vision for well-being but both leaders and teachers need a deeper understanding of how to plan and promote it. Students are happy in school, well cared for and can name adults in the school that they trust. They are very positive about the school and their teachers.

STUDENTS' ACHIEVEMENTS

Across the school, students' attainment is mostly acceptable. However, it is good in Islamic education, in Arabic in Kindergarten (KG) and in both Arabic and science in Cycle 2. Students make good progress in Islamic education, Arabic and English in KG, and in science, in Cycle 2.

ENGLISH	MATHS	SCIENCE
ATTAINMENT	ATTAINMENT	ATTAINMENT
PROGRESS	PROGRESS	PROGRESS
KG: ACCEPTABLE, GOOD	KG: ACCEPTABLE, ACCEPTABLE	KG: ACCEPTABLE, ACCEPTABLE
CYCLE 1: ACCEPTABLE, ACCEPTABLE	CYCLE 1: ACCEPTABLE, ACCEPTABLE	CYCLE 1: ACCEPTABLE, ACCEPTABLE
CYCLE 2: ACCEPTABLE, ACCEPTABLE	CYCLE 2: ACCEPTABLE, ACCEPTABLE	CYCLE 2: GOOD, GOOD

ARABIC AS FIRST LANGUAGE	ARABIC AS SECOND LANGUAGE	ISLAMIC
ATTAINMENT	ATTAINMENT	ATTAINMENT
PROGRESS	PROGRESS	PROGRESS
KG: GOOD, GOOD	KG: NOT APPLICABLE, NOT APPLICABLE	KG: GOOD, GOOD
CYCLE 1: ACCEPTABLE, GOOD	CYCLE 1: NOT APPLICABLE, NOT APPLICABLE	CYCLE 1: ACCEPTABLE, GOOD
CYCLE 2: GOOD, GOOD	CYCLE 2: NOT APPLICABLE, NOT APPLICABLE	CYCLE 2: ACCEPTABLE, GOOD

LEARNING SKILLS
ATTAINMENT
PROGRESS
KG: ACCEPTABLE
CYCLE 1: ACCEPTABLE
CYCLE 2: ACCEPTABLE



STUDENTS' PERSONAL AND SOCIAL DEVELOPMENT

Across the school, the students display very responsible attitudes and behave well. They understand clearly how Islamic values' impact on the life in the UAE and the Emirati culture. However, their awareness of other world cultures is less well developed. Students are keen to take on leadership roles, but the school provides limited opportunity for them to take the initiative themselves.

PERSONAL DEVELOPMENT	UNDERSTANDING OF ISLAMIC VALUES & AWARENESS OF EMIRATI & WORLD CULTURES	SOCIAL RESPONSIBILITY & INNOVATIVE SKILLS
KG: GOOD	KG: GOOD	KG: ACCEPTABLE
CYCLE 1: GOOD	CYCLE 1: GOOD	CYCLE 1: ACCEPTABLE
CYCLE 2: VERY GOOD	CYCLE 2: GOOD	CYCLE 2: ACCEPTABLE

PROVISION FOR LEARNERS

In some lessons, support for developing students' critical thinking and independent learning is inconsistent. While teachers mostly possess secure subject knowledge, fewer demonstrate a clear understanding of how students learn. Utilisation of available assessment data is restricted to lesson planning and matching individual student needs. In the best lessons, students display enthusiasm for learning and actively engage in their educational journey.

The curriculum closely aligns with the Ministry of Education (MoE), offering a broad and balanced framework with periodic reviews. UAE social studies and moral education adhere to MoE guidelines, fostering strong connections with Emirati culture and traditions. However, adapting the curriculum to cater to diverse student groups is an area that needs further development.

The school effectively ensures students' safeguarding, health and safety, with attentive supervision throughout the day. Yet, there's room for improvement in the observation and management of bus departures and arrivals. Positive relationships are evident among students and staff, and the school has implemented robust systems for student care and support.



TEACHING	ASSESSMENT	CURRICULUM DESIGN
KG: ACCEPTABLE	KG: ACCEPTABLE	KG: ACCEPTABLE
CYCLE 1: ACCEPTABLE	CYCLE 1: ACCEPTABLE	CYCLE 1: ACCEPTABLE
CYCLE 2: ACCEPTABLE	CYCLE 2: ACCEPTABLE	CYCLE 2: ACCEPTABLE

CURRICULUM ADAPTATION	HEALTH & SAFETY	CARE & SUPPORT
KG: ACCEPTABLE	KG: GOOD	KG: ACCEPTABLE
CYCLE 1: ACCEPTABLE	CYCLE 1: GOOD	CYCLE 1: ACCEPTABLE
CYCLE 2: ACCEPTABLE	CYCLE 2: GOOD	CYCLE 2: ACCEPTABLE

INCLUSION

THE OVERALL PROVISION OF STUDENTS OF DETERMINATION IS ACCEPTABLE

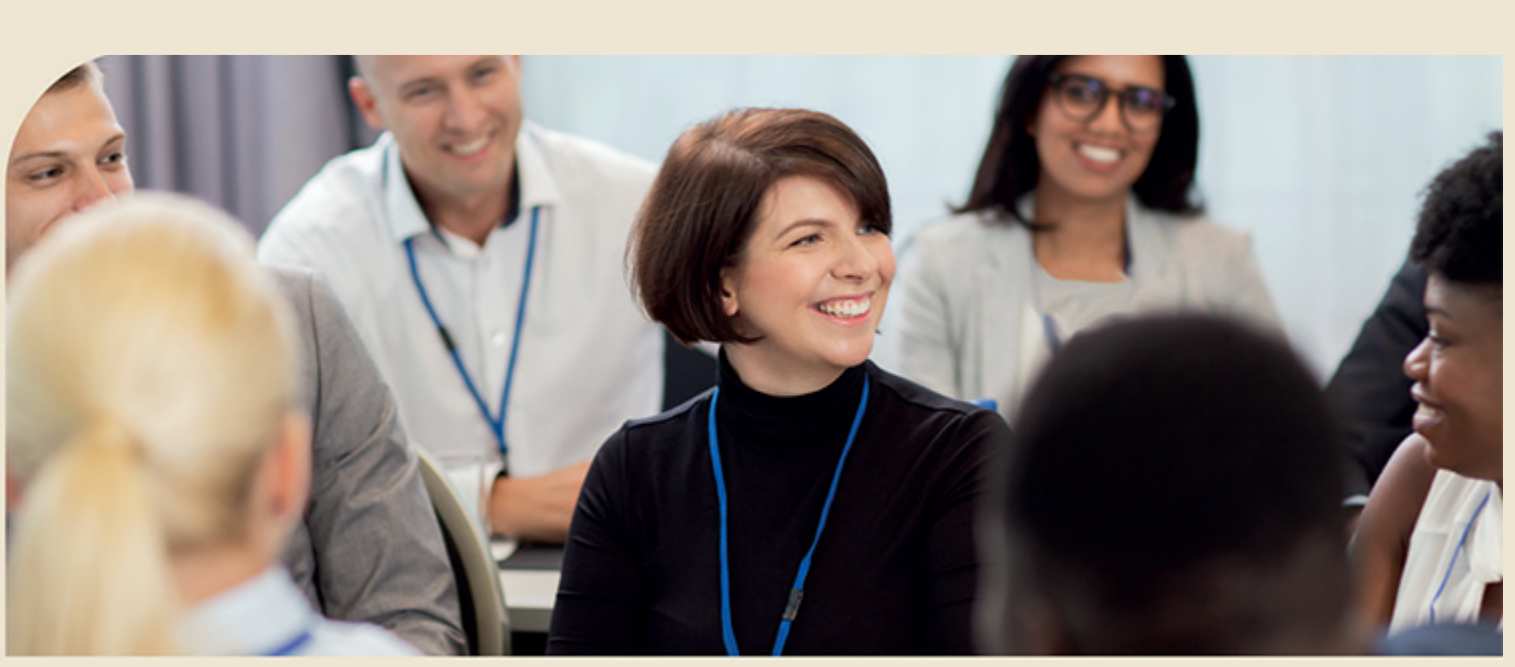
The school's leadership has established procedures to identify students of determination. The inclusion team ensures that parents have a positive relationship with the school and work closely with them to support their children. Parents attend IEP development meetings and receive progress reports each term. At times, in some lessons, some students of determination are not engaged in meaningful or accessible activities. Progress is tracked through the achievement of IEP targets as well as through subject exams and structured observations.



LEADERSHIP AND MANAGEMENT

Leadership and governance in the school generally meet acceptable standards. School leaders, under the guidance of the principal, demonstrate a clear grasp of the school's dynamics and are informed about UAE's educational priorities. Most middle leaders possess a firm understanding of what defines effective practices. Parental engagement is commendable, with the school actively involving parents as collaborative partners in their children's educational journeys.

THE EFFECTIVENESS OF LEADERSHIP	ACCEPTABLE
SCHOOL SELF-EVALUATION AND IMPROVEMENT PLANNING	ACCEPTABLE
PARENTS AND THE COMMUNITY	GOOD
GOVERNANCE	ACCEPTABLE
MANAGEMENT, STAFFING, FACILITIES AND RESOURCES	ACCEPTABLE



CLICK HERE TO ACCESS THE FULL INSPECTION REPORT FOR THIS SCHOOL