



INSPECTION SUMMARY REPORT

Parent Edition | 2023-2024

AL MAWAKEB SCHOOL AL GARHOUD L.L.C

US

GOOD

AL MAWAKEB SCHOOL AL GARHOUD L.L.C
US



Inspection Dates
30 October - 03 November 2023

Principal
Omar Hatoum

LEARN MORE ABOUT THE SCHOOL

LEARN MORE ABOUT THE SCHOOL FEES

2310
Students

225
Emirati Students

101
Students of Determination

121
Teachers

3
Teaching Assistants

1
Guidance counsellors

OVERALL SCHOOL PERFORMANCE



GOOD

OUTSTANDING	Quality of performance substantially exceeds the expectation of the UAE
VERY GOOD	Quality of performance exceeds the expectation of the UAE
GOOD	Quality of performance meets the expectation of the UAE (This is the expected level for every school in the UAE)
ACCEPTABLE	Quality of performance meets the minimum level of quality required in the UAE
WEAK	Quality of performance is below the expectation of the UAE
VERY WEAK	Quality of performance is significantly below the expectation of the UAE

WHAT ARE THE SCHOOLS' HIGHLIGHTS AND POINTS TO IMPROVE?

SCHOOLS HIGHLIGHTS

- The highly effective health and safety procedures at the school
- The strong partnerships with parents and the local community
- Students' excellent personal and social development and their high achievements in the high school
- Students' improved progress in elementary school and middle school

POINTS TO IMPROVE

- Enhance the teaching quality and outcomes for Kindergarten (KG) children
- Provide leaders at all levels with the expertise to improve teaching, particularly in the lower three phases
- Use the self-evaluation exercise as a tool to identify the school's improvement priorities
- Produce more meaningful and impactful improvement plans

WELLBEING

THE OVERALL JUDGEMENT OF WELLBEING IS **GOOD**



The well-being team, guided by a dedicated leader, demonstrates deep understanding and commitment to student well-being. A range of methods and informal assessments are employed to monitor well-being, enabling quick and effective actions and interventions, bolstered by strong teacher-student relationships. The school values student input, maintaining open channels for communication. Various services and initiatives offer timely support, and students actively lead various endeavours such as clubs, environmental projects, and community service.

STUDENTS' ACHIEVEMENTS

Students' achievements span from acceptable to outstanding in key subjects, with real strengths in the high school. Children's achievement in the KG is lower than in the other phases. In most lessons, students engage in learning, using technology for basic research, applying their knowledge to real-world situations, and connecting various areas of learning. The emphasis on practical application and interdisciplinary connections contributes to a well-rounded educational experience.

ENGLISH	MATHS	SCIENCE
ATTAINMENT	ATTAINMENT	ATTAINMENT
PROGRESS	PROGRESS	PROGRESS
KG: ACCEPTABLE	KG: GOOD	KG: ACCEPTABLE
ELEMENTARY: GOOD	ELEMENTARY: GOOD	ELEMENTARY: GOOD
MIDDLE: GOOD	MIDDLE: VERY GOOD	MIDDLE: GOOD
HIGH: VERY GOOD	HIGH: OUTSTANDING	HIGH: VERY GOOD

ARABIC AS FIRST LANGUAGE	ARABIC AS SECOND LANGUAGE	ISLAMIC
ATTAINMENT	ATTAINMENT	ATTAINMENT
PROGRESS	PROGRESS	PROGRESS
KG: NOT APPLICABLE	KG: NOT APPLICABLE	KG: NOT APPLICABLE
ELEMENTARY: GOOD	ELEMENTARY: GOOD	ELEMENTARY: GOOD
MIDDLE: GOOD	MIDDLE: GOOD	MIDDLE: GOOD
HIGH: VERY GOOD	HIGH: GOOD	HIGH: VERY GOOD

LEARNING SKILLS
KG: GOOD
ELEMENTARY: GOOD
MIDDLE: VERY GOOD
HIGH: VERY GOOD



STUDENTS' PERSONAL AND SOCIAL DEVELOPMENT



Students exhibit very positive attitudes towards learning and the school, maintaining consistently good behaviour in lessons. They showcase a solid understanding of Islamic values, UAE culture, and global cultures. The school stands out for its strengths in students' social contributions and environmental awareness. Students take the initiative to lead impactful projects, benefiting both the local and wider community. This active engagement reflects a positive and socially responsible school culture.

PERSONAL DEVELOPMENT	UNDERSTANDING OF ISLAMIC VALUES & AWARENESS OF EMIRATI & WORLD CULTURES	SOCIAL RESPONSIBILITY & INNOVATIVE SKILLS
KG: OUTSTANDING	KG: VERY GOOD	KG: OUTSTANDING
ELEMENTARY: OUTSTANDING	ELEMENTARY: OUTSTANDING	ELEMENTARY: OUTSTANDING
MIDDLE: OUTSTANDING	MIDDLE: OUTSTANDING	MIDDLE: OUTSTANDING
HIGH: OUTSTANDING	HIGH: OUTSTANDING	HIGH: OUTSTANDING

PROVISION FOR LEARNERS

Teaching quality at the school ranges from acceptable to very good. Teachers provide ample opportunities for students to engage with technology and collaborate in group settings. The school has established effective systems for collecting and analysing a variety of assessment data. This year, there has been a noticeable improvement in how teachers utilise test scores for lesson planning and instruction. The increased commitment to using assessment information positively impacts the overall teaching methodology.

The curriculum primarily adheres to the Common Core State Standards (CCSS) across most subjects, integrating Ministry of Education (MoE) standards in certain areas. Regular curriculum reviews ensure both vertical and horizontal alignment, incorporating many cross-curricular connections and relevance to UAE society. Adaptation of the curriculum to meet student needs is generally effective, though it varies across different phases, with high school showing particular strength. This reflects the school's comprehensive approach to curriculum development.

In terms of health and safety, the school demonstrates exceptional effectiveness. The well-maintained buildings and facilities create a secure environment. Rigorous health record-keeping and evacuation procedures are in place. The school effectively manages student attendance and behavior. While the overall quality of care and support for students is commendable, it is particularly outstanding in the high school, indicating a higher level of proficiency in this area.



TEACHING	ASSESSMENT	CURRICULUM DESIGN
KG: ACCEPTABLE	KG: GOOD	KG: GOOD
ELEMENTARY: GOOD	ELEMENTARY: GOOD	ELEMENTARY: GOOD
MIDDLE: GOOD	MIDDLE: GOOD	MIDDLE: GOOD
HIGH: VERY GOOD	HIGH: GOOD	HIGH: VERY GOOD

CURRICULUM ADAPTATION	HEALTH & SAFETY	CARE & SUPPORT
KG: ACCEPTABLE	KG: VERY GOOD	KG: GOOD
ELEMENTARY: GOOD	ELEMENTARY: VERY GOOD	ELEMENTARY: GOOD
MIDDLE: GOOD	MIDDLE: VERY GOOD	MIDDLE: GOOD
HIGH: VERY GOOD	HIGH: VERY GOOD	HIGH: VERY GOOD

INCLUSION

THE OVERALL PROVISION OF STUDENTS OF DETERMINATION IS **GOOD**

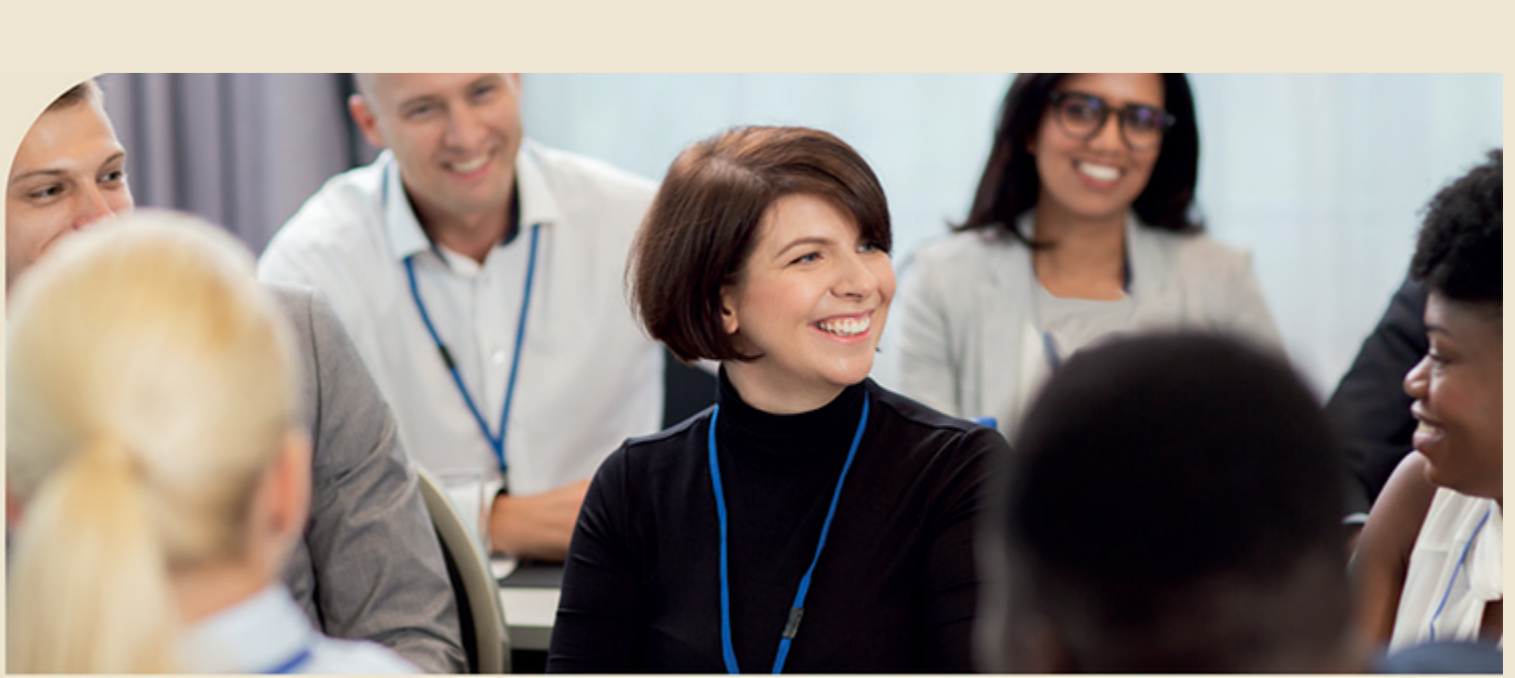
The inclusion leader, supported by the inclusion champion, fosters an inclusive ethos throughout the school, addressing diverse student needs. Assessment systems provide information on progress and areas for improvement. Internal processes monitor students, yet there is room for improvement through regular screening and analysis for a more robust identification system. Parents appreciate the school's support, feeling well-informed and respected in the development of individual education plans (IEPs). While alternative learning pathways are not fully developed, almost all students make at least good progress towards IEP goals.



LEADERSHIP AND MANAGEMENT

School leaders effectively communicate the school's vision, mission, and core values to all stakeholders. Improvement plans address various aspects and incorporate external recommendations. Strong partnerships with parents contribute to a supportive school community. Governors, well-acquainted with the school, informally hold leaders accountable. The school is equipped with the necessary resources and staffing to facilitate effective teaching and learning. Overall, there is a cohesive approach to leadership, communication, and resource allocation, fostering a conducive environment for education.

THE EFFECTIVENESS OF LEADERSHIP	GOOD
SCHOOL SELF-EVALUATION AND IMPROVEMENT PLANNING	GOOD
PARENTS AND THE COMMUNITY	VERY GOOD
GOVERNANCE	GOOD
MANAGEMENT, STAFFING, FACILITIES AND RESOURCES	GOOD



[CLICK HERE TO ACCESS THE FULL INSPECTION REPORT FOR THIS SCHOOL](#)