



INSPECTION SUMMARY REPORT

Parent Edition | 2023-2024

DEIRA PRIVATE SCHOOL

UK

ACCEPTABLE

DEIRA PRIVATE SCHOOL
UK

Inspection Dates
22 - 25 January 2024

Principal
Dr Ritika Anand

LEARN MORE ABOUT
THE SCHOOL

LEARN MORE ABOUT
THE SCHOOL FEES

852
Students

87
Emirati Students

170
Students of
Determination

68
Teachers

39
Teaching
Assistants

1
Guidance
counsellors

OVERALL SCHOOL PERFORMANCE

ACCEPTABLE

OUTSTANDING | Quality of performance substantially exceeds the expectation of the UAE

VERY GOOD | Quality of performance exceeds the expectation of the UAE

GOOD | Quality of performance meets the expectation of the UAE (This is the expected level for every school in the UAE)

ACCEPTABLE | Quality of performance meets the minimum level of quality required in the UAE

WEAK | Quality of performance is below the expectation of the UAE

VERY WEAK | Quality of performance is significantly below the expectation of the UAE

WHAT ARE THE SCHOOLS' HIGHLIGHTS AND POINTS TO IMPROVE?

SCHOOLS HIGHLIGHTS

- The school's promotion of inclusion as being central to their vision
- The good progress which students make in English, mathematics and science
- Students' strong awareness of Emirati culture and Islamic values, particularly in the secondary phase
- The very effective communication channels which exist between parents and the school
- Comprehensive systems of assessment which provide accurate progress information for decision-makers

POINTS TO IMPROVE

- Review the quality of lesson planning and delivery for all students of determination, ensuring that individualised progression and opportunities to embed learning are consistent and effective across the school
- Ensure that the quality of teaching for effective learning is consistently good or better, by identifying and sharing best practice across all phases and subjects
- Review and implement modifications to the curriculum, and planned learning activities to more effectively meet the learning needs of all groups of students
- Ensure that the learning data and information which the school gathers and analyses, is reflected in all lessons so that it impacts directly on student learning

WELLBEING

THE OVERALL JUDGEMENT OF WELLBEING IS **GOOD**



Leaders exhibit a strong commitment to promoting well-being from the Foundation Stage, prioritising stakeholder input to foster a genuine community spirit. This ethos of positive interactions between staff and students underpins a safe, content, and healthy environment. The school cultivates an atmosphere where students are encouraged to engage in self-reflection, offering numerous opportunities for personal growth and understanding.

STUDENTS' ACHIEVEMENTS

Students make good progress in English, maths and science. Across all phases, students are enthusiastic, and motivated learners. Students in Primary and Secondary collaborate well with their peers when opportunities are provided for in lessons. In Foundation Stage, children engage in outdoor play-based activities which lead to improved language and communication skills. Sometimes, students use digital devices and media to support their learning in lessons.

ENGLISH

	ATTAINMENT	PROGRESS
FOUNDATION STAGE	ACCEPTABLE	GOOD
PRIMARY	ACCEPTABLE	GOOD
SECONDARY	ACCEPTABLE	GOOD

MATHS

	ATTAINMENT	PROGRESS
FOUNDATION STAGE	ACCEPTABLE	GOOD
PRIMARY	ACCEPTABLE	GOOD
SECONDARY	ACCEPTABLE	GOOD

SCIENCE

	ATTAINMENT	PROGRESS
FOUNDATION STAGE	ACCEPTABLE	GOOD
PRIMARY	ACCEPTABLE	GOOD
SECONDARY	ACCEPTABLE	GOOD

ARABIC AS FIRST LANGUAGE

	ATTAINMENT	PROGRESS
FOUNDATION STAGE	NOT APPLICABLE	NOT APPLICABLE
PRIMARY	ACCEPTABLE	ACCEPTABLE
SECONDARY	ACCEPTABLE	ACCEPTABLE

ARABIC AS SECOND LANGUAGE

	ATTAINMENT	PROGRESS
FOUNDATION STAGE	NOT APPLICABLE	NOT APPLICABLE
PRIMARY	ACCEPTABLE	ACCEPTABLE
SECONDARY	ACCEPTABLE	ACCEPTABLE

ISLAMIC

	ATTAINMENT	PROGRESS
FOUNDATION STAGE	NOT APPLICABLE	NOT APPLICABLE
PRIMARY	ACCEPTABLE	ACCEPTABLE
SECONDARY	ACCEPTABLE	ACCEPTABLE

LEARNING SKILLS

FOUNDATION STAGE	GOOD
PRIMARY	ACCEPTABLE
SECONDARY	ACCEPTABLE



STUDENTS' PERSONAL AND SOCIAL DEVELOPMENT

Behaviour is positive throughout the school and students demonstrate high levels of self-discipline. Students develop respectful and strong relationships with their teachers and with each other. Students across the school show a secure understanding of how to stay safe and healthy. They are fully aware of the need to make healthy food choices. Across all phases, students participate in activities to promote and care for their school environment.

PERSONAL DEVELOPMENT

FOUNDATION STAGE	GOOD
PRIMARY	GOOD
SECONDARY	VERY GOOD

UNDERSTANDING OF ISLAMIC VALUES & AWARENESS OF EMIRATI & WORLD CULTURES

FOUNDATION STAGE	GOOD
PRIMARY	GOOD
SECONDARY	VERY GOOD

SOCIAL RESPONSIBILITY & INNOVATIVE SKILLS

FOUNDATION STAGE	GOOD
PRIMARY	GOOD
SECONDARY	GOOD

PROVISION FOR LEARNERS

Teachers possess a strong grasp of their subjects and understand student learning dynamics, fostering engaging learning environments. The school benchmarks student performance globally through effective systems, with internal assessments guiding curriculum adjustments to cater to all learners.

The curriculum is thoughtfully designed, with activities that build on students' prior knowledge and skills, ensuring coherent learning progression. Interdisciplinary connections enhance the learning experience, complemented by a diverse range of extracurricular activities that support personal, social, creative, and physical growth. The curriculum also integrates the values, culture, and history of the UAE, enriching students' understanding.

Safeguarding measures are stringent, with comprehensive systems to protect students from abuse, including online. The school champions healthy living among students, families, and staff. Admission processes for students with additional needs are clear and thorough, reflecting the school's inclusive ethos and its commitment to supporting all community members.



TEACHING

FOUNDATION STAGE	ACCEPTABLE
PRIMARY	ACCEPTABLE
SECONDARY	ACCEPTABLE

ASSESSMENT

FOUNDATION STAGE	GOOD
PRIMARY	GOOD
SECONDARY	GOOD

CURRICULUM DESIGN

FOUNDATION STAGE	GOOD
PRIMARY	GOOD
SECONDARY	GOOD

CURRICULUM ADAPTATION

FOUNDATION STAGE	GOOD
PRIMARY	GOOD
SECONDARY	GOOD

HEALTH & SAFETY

FOUNDATION STAGE	VERY GOOD
PRIMARY	VERY GOOD
SECONDARY	VERY GOOD

CARE & SUPPORT

FOUNDATION STAGE	GOOD
PRIMARY	GOOD
SECONDARY	GOOD

INCLUSION

THE OVERALL PROVISION OF STUDENTS OF DETERMINATION IS **GOOD**

The school is dedicated to fostering an inclusive environment, embracing students with diverse needs and ensuring they receive comprehensive academic and social support. The process of identifying student needs is robust, laying the foundation for well-crafted Individual Education Plans (IEPs). Special Educators bring additional expertise, advising teachers on enhancing resources and instructional methods. These IEPs specify weekly and termly objectives, outlining strategies to provide tailored learning experiences for each student.



LEADERSHIP AND MANAGEMENT

The principal, together with senior and middle leadership teams provide effective management and leadership of the school. The governing board includes representation from all stakeholders and board members visit the school on a regular basis. The communication channels which exist between the parents and the school are very effective and parents feel that they have a real voice in which. Most aspects of the day-to-day management of the school are well organised which contributes to a positive school atmosphere.

THE EFFECTIVENESS OF LEADERSHIP

ACCEPTABLE

SCHOOL SELF-EVALUATION AND IMPROVEMENT PLANNING

ACCEPTABLE

PARENTS AND THE COMMUNITY

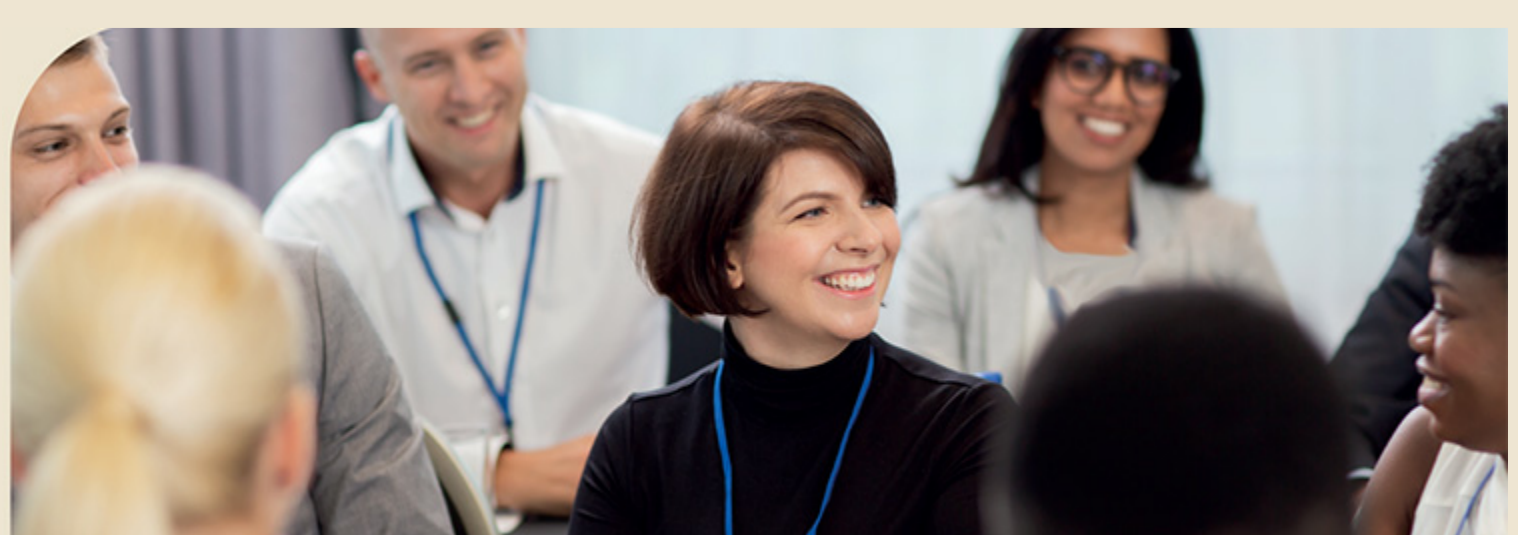
VERY GOOD

GOVERNANCE

GOOD

MANAGEMENT, STAFFING, FACILITIES AND RESOURCES

GOOD



CLICK HERE TO ACCESS THE FULL INSPECTION REPORT FOR THIS SCHOOL