



# INSPECTION SUMMARY REPORT

Parent Edition | 2023-2024

HORIZONS ENGLISH SCHOOL L.L.C

UK

**OUTSTANDING**

HORIZONS ENGLISH SCHOOL L.L.C  
UK

**Inspection Dates**  
06 - 10 November 2023

**Principal**  
Nicholas William Hart

[LEARN MORE ABOUT THE SCHOOL](#)

[LEARN MORE ABOUT THE SCHOOL FEES](#)

**1301**  
Students

**41**  
Emirati Students

**117**  
Students of Determination

**86**  
Teachers

**45**  
Teaching Assistants

**1**  
Guidance counsellors

## OVERALL SCHOOL PERFORMANCE

**OUTSTANDING**

<b>OUTSTANDING</b>	Quality of performance substantially exceeds the expectation of the UAE
<b>VERY GOOD</b>	Quality of performance exceeds the expectation of the UAE
<b>GOOD</b>	Quality of performance meets the expectation of the UAE (This is the expected level for every school in the UAE)
<b>ACCEPTABLE</b>	Quality of performance meets the minimum level of quality required in the UAE
<b>WEAK</b>	Quality of performance is below the expectation of the UAE
<b>VERY WEAK</b>	Quality of performance is significantly below the expectation of the UAE

## WHAT ARE THE SCHOOLS' HIGHLIGHTS AND POINTS TO IMPROVE?

**SCHOOLS HIGHLIGHTS**

- Students' outstanding progress and attainment in English, mathematics and science
- The community spirit, caring culture and high level of wellbeing across the school
- Teaching at the Foundation Stage (FS) and the achievements of the children
- A curriculum which is taught very skillfully, and which includes smooth progression
- Strong leadership at all levels, very positive input from teachers and other staff, and strong support and challenge from governors

**POINTS TO IMPROVE**

- Raise teachers' expectations and amend aspects of the curriculum in Islamic Education and Arabic to improve attainment and accelerate students' progress
- Share the best practice and ensure rigorous self-evaluation and improvement in every aspect of the school's work

## WELLBEING

THE OVERALL JUDGEMENT OF WELLBEING IS **OUTSTANDING**



The school has a strong sense of well-being. Students, staff and parents enjoy good relationships. All are involved in protecting and promoting the well-being of others. School leaders base their efforts to improve this aspect on good research about it. Students and staff actively use sensible ways to manage their own individual well-being. Events and activities address concerns identified by students. Online safety is promoted well and is a continuing priority.

## STUDENTS' ACHIEVEMENTS

Students do very well at both phases in English, mathematics and science. Attainment and progress are good or very good in Islamic education and Arabic. Foundation Stage children make rapid progress in number. By Year 6, students can complete difficult fraction calculations and they can plan scientific investigations. In English, some high-attaining students at the upper end of primary are reaching high standards well ahead of expected levels. Learning skills are well developed.

ENGLISH	MATHS	SCIENCE
ATTAINMENT	ATTAINMENT	ATTAINMENT
PROGRESS	PROGRESS	PROGRESS
FOUNDATION STAGE: <b>OUTSTANDING</b> (Attainment), <b>OUTSTANDING</b> (Progress)	FOUNDATION STAGE: <b>OUTSTANDING</b> (Attainment), <b>OUTSTANDING</b> (Progress)	FOUNDATION STAGE: <b>OUTSTANDING</b> (Attainment), <b>OUTSTANDING</b> (Progress)
PRIMARY: <b>OUTSTANDING</b> (Attainment), <b>OUTSTANDING</b> (Progress)	PRIMARY: <b>OUTSTANDING</b> (Attainment), <b>OUTSTANDING</b> (Progress)	PRIMARY: <b>OUTSTANDING</b> (Attainment), <b>OUTSTANDING</b> (Progress)
ARABIC AS FIRST LANGUAGE	ARABIC AS SECOND LANGUAGE	ISLAMIC
ATTAINMENT	ATTAINMENT	ATTAINMENT
PROGRESS	PROGRESS	PROGRESS
FOUNDATION STAGE: <b>NOT APPLICABLE</b> (Attainment), <b>NOT APPLICABLE</b> (Progress)	FOUNDATION STAGE: <b>NOT APPLICABLE</b> (Attainment), <b>NOT APPLICABLE</b> (Progress)	FOUNDATION STAGE: <b>NOT APPLICABLE</b> (Attainment), <b>NOT APPLICABLE</b> (Progress)
PRIMARY: <b>GOOD</b> (Attainment), <b>GOOD</b> (Progress)	PRIMARY: <b>GOOD</b> (Attainment), <b>VERY GOOD</b> (Progress)	PRIMARY: <b>GOOD</b> (Attainment), <b>GOOD</b> (Progress)
LEARNING SKILLS		
FOUNDATION STAGE: <b>OUTSTANDING</b>		
PRIMARY: <b>OUTSTANDING</b>		

## STUDENTS' PERSONAL AND SOCIAL DEVELOPMENT



Students have very positive attitudes towards their work and to others. Their behaviour is excellent. Their knowledge and understanding of Islamic values are very well developed. They can link these values to everyday life. Understanding of Emirati culture is very well developed too. FS children show notable understanding of environmental issues. Overall, students demonstrate outstanding environmental awareness. They are responsible citizens in the school community.

PERSONAL DEVELOPMENT	UNDERSTANDING OF ISLAMIC VALUES & AWARENESS OF EMIRATI & WORLD CULTURES	SOCIAL RESPONSIBILITY & INNOVATIVE SKILLS
FOUNDATION STAGE: <b>OUTSTANDING</b>	FOUNDATION STAGE: <b>OUTSTANDING</b>	FOUNDATION STAGE: <b>OUTSTANDING</b>
PRIMARY: <b>OUTSTANDING</b>	PRIMARY: <b>OUTSTANDING</b>	PRIMARY: <b>OUTSTANDING</b>

## PROVISION FOR LEARNERS

The teaching quality at the school is consistently of the highest standard. A notable strength lies in teachers' ability to tailor their explanations to the needs of different student groups. The assessment of individual student progress is highly effective, with results being well utilised in lesson planning. In the Foundation Stage (FS), lessons are appropriately pitched to the young learners' level.

Teachers' tasks align well with the curriculum, effectively enhancing the learning experience. They skillfully draw connections between subjects and relate academic content to real-world contexts. However, there is potential for further development in these cross-curricular links.

Staff are dedicated to ensuring the health and safety of everyone in the school, achieving high success in this area. The school's environment is nurturing and caring, fostering a setting in which children and students can thrive and flourish. Both academic skills and personal and social development are nurtured equally, contributing to a palpable sense of wellbeing among both staff and students

TEACHING	ASSESSMENT	CURRICULUM DESIGN
FOUNDATION STAGE: <b>OUTSTANDING</b>	FOUNDATION STAGE: <b>OUTSTANDING</b>	FOUNDATION STAGE: <b>OUTSTANDING</b>
PRIMARY: <b>OUTSTANDING</b>	PRIMARY: <b>OUTSTANDING</b>	PRIMARY: <b>OUTSTANDING</b>
CURRICULUM ADAPTATION	HEALTH & SAFETY	CARE & SUPPORT
FOUNDATION STAGE: <b>OUTSTANDING</b>	FOUNDATION STAGE: <b>OUTSTANDING</b>	FOUNDATION STAGE: <b>OUTSTANDING</b>
PRIMARY: <b>OUTSTANDING</b>	PRIMARY: <b>OUTSTANDING</b>	PRIMARY: <b>OUTSTANDING</b>

## INCLUSION

THE OVERALL PROVISION OF STUDENTS OF DETERMINATION IS **OUTSTANDING**

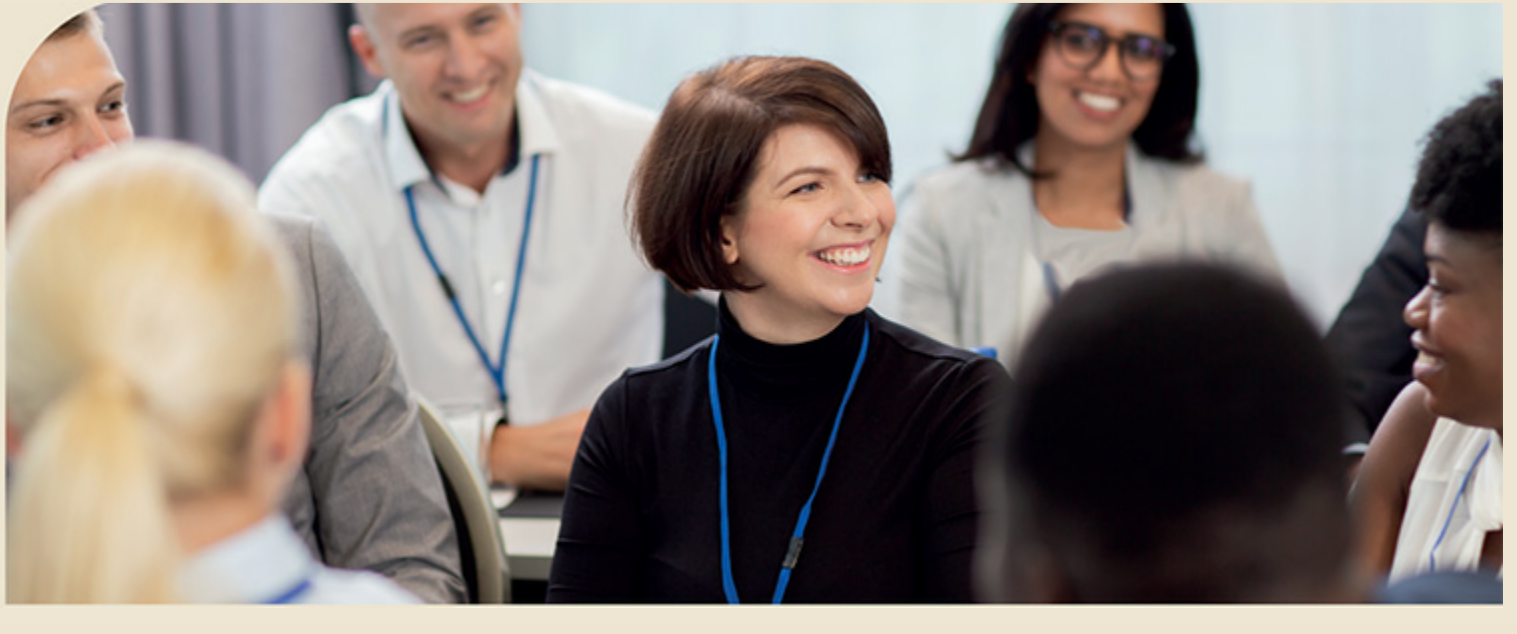
The school is highly inclusive, from the very point of admitting students, through the curriculum to leadership, teaching, learning and support. Staff are alert to early signs that students are having difficulties. They identify barriers to learning well and make adjustments. Staff effectively engage parents. The 'New Horizons Pathways' programme is very good at preparing students for the next stage of their education. Most students of determination make outstanding progress in their learning across the key subjects and in their personal development.



## LEADERSHIP AND MANAGEMENT

The quality of leadership at all levels of the school is high. The new principal has made a positive start in his post. All staff contribute to accurate school self-evaluation. They are committed to implementing improvements and have had much success. Partnerships with parents and others are very positive. Governors hold staff to account in a very rigorous but supportive manner. They ensure that resources and facilities are of high quality.

THE EFFECTIVENESS OF LEADERSHIP	<b>OUTSTANDING</b>
SCHOOL SELF-EVALUATION AND IMPROVEMENT PLANNING	<b>OUTSTANDING</b>
PARENTS AND THE COMMUNITY	<b>OUTSTANDING</b>
GOVERNANCE	<b>OUTSTANDING</b>
MANAGEMENT, STAFFING, FACILITIES AND RESOURCES	<b>OUTSTANDING</b>



[CLICK HERE TO ACCESS THE FULL INSPECTION REPORT FOR THIS SCHOOL](#)