



INSPECTION SUMMARY REPORT

Parent Edition | 2023-2024

GEMS WORLD ACADEMY

IB

VERY GOOD

GEMS WORLD ACADEMY
IB

Inspection Dates
23 - 27 October 2023

Principal
Saima Rana

LEARN MORE ABOUT THE SCHOOL

LEARN MORE ABOUT THE SCHOOL FEES

2022 Students

82 Emirati Students

197 Students of Determination

188 Teachers

104 Teaching Assistants

9 Guidance counsellors

OVERALL SCHOOL PERFORMANCE

VERY GOOD

OUTSTANDING	Quality of performance substantially exceeds the expectation of the UAE
VERY GOOD	Quality of performance exceeds the expectation of the UAE
GOOD	Quality of performance meets the expectation of the UAE (This is the expected level for every school in the UAE)
ACCEPTABLE	Quality of performance meets the minimum level of quality required in the UAE
WEAK	Quality of performance is below the expectation of the UAE
VERY WEAK	Quality of performance is significantly below the expectation of the UAE

WHAT ARE THE SCHOOLS' HIGHLIGHTS AND POINTS TO IMPROVE?

SCHOOLS HIGHLIGHTS

- Children's high achievement in the Kindergarten (KG) as a result of outstanding teaching for effective learning
- Students' personal and social development, and their innovation skills
- The protection, care, guidance and pastoral support
- Parental involvement makes highly effective contributions to raising standards, including the school's wide curriculum choices
- The efficient day-to-day management, staffing, and the high-quality resources

POINTS TO IMPROVE

- Utilise internal and external assessment information effectively to deliver lessons that cater to the diverse needs of all learners, including EAL students and newcomers, so all achieve well
- Ensure the consistent delivery of high-quality teaching, adhering to best practices, so that all students, particularly in Islamic education, Arabic, and mathematics, can reach their full potential

WELLBEING

THE OVERALL JUDGEMENT OF WELLBEING IS **VERY GOOD**



Wellbeing is at the core of the school's culture, guided by the 'CARE' principles. Leaders and champions promote these principles, but alignment with the inspection framework is incomplete. Students readily share concerns, with a strong support network and feel comfortable approaching trusted adults with worries. Staff receive excellent induction and ongoing support, contributing to high morale. The school emphasises self-support and safety awareness in students, both in behaviour and online.

STUDENTS' ACHIEVEMENTS

Students achievement is best in English and science across the school, with outstanding progress in the Kindergarten. Arabic achievement is good in the Primary Years Programme (PYP) but only acceptable in Islamic education in the same phase. Mathematics achievement is very good in the Middle Years Programme (MYP) and good in the PYP and Diploma Programme (DP). Arabic as an additional language shows weak attainment in the MYP, while children's learning skills are outstanding in the KG and very good in other phases.

ENGLISH

ATTAINMENT PROGRESS

KG	VERY GOOD	OUTSTANDING
PYP	VERY GOOD	VERY GOOD
MYP	VERY GOOD	VERY GOOD
DP	VERY GOOD	VERY GOOD

MATHS

ATTAINMENT PROGRESS

KG	VERY GOOD	OUTSTANDING
PYP	GOOD	GOOD
MYP	VERY GOOD	VERY GOOD
DP	GOOD	GOOD

SCIENCE

ATTAINMENT PROGRESS

KG	OUTSTANDING	OUTSTANDING
PYP	VERY GOOD	VERY GOOD
MYP	VERY GOOD	VERY GOOD
DP	VERY GOOD	OUTSTANDING

ARABIC AS FIRST LANGUAGE

ATTAINMENT PROGRESS

KG	NOT APPLICABLE	NOT APPLICABLE
PYP	GOOD	GOOD
MYP	ACCEPTABLE	ACCEPTABLE
DP	ACCEPTABLE	ACCEPTABLE

ARABIC AS SECOND LANGUAGE

ATTAINMENT PROGRESS

KG	NOT APPLICABLE	NOT APPLICABLE
PYP	GOOD	GOOD
MYP	WEAK	ACCEPTABLE
DP	NOT APPLICABLE	NOT APPLICABLE

ISLAMIC

ATTAINMENT PROGRESS

KG	NOT APPLICABLE	NOT APPLICABLE
PYP	ACCEPTABLE	ACCEPTABLE
MYP	GOOD	GOOD
DP	GOOD	GOOD

LEARNING SKILLS

KG	OUTSTANDING
PYP	VERY GOOD
MYP	VERY GOOD
DP	VERY GOOD



STUDENTS' PERSONAL AND SOCIAL DEVELOPMENT

The school maintains an exemplary positive behaviour and attitude culture across all phases, fostering a respectful and inclusive community. Students excel in understanding Islamic values, Emirati heritage, and various cultures, promoting integration. They actively engage in leadership roles, charity drives, and sustainability initiatives, displaying strong work ethic, creativity, and global issue awareness, particularly related to the United Nations and climate change. The Eco council organise many highly successful school-wide recycling initiatives.

PERSONAL DEVELOPMENT

KG	OUTSTANDING
PYP	OUTSTANDING
MYP	OUTSTANDING
DP	OUTSTANDING

UNDERSTANDING OF ISLAMIC VALUES & AWARENESS OF EMIRATI & WORLD CULTURES

KG	OUTSTANDING
PYP	OUTSTANDING
MYP	OUTSTANDING
DP	OUTSTANDING

SOCIAL RESPONSIBILITY & INNOVATIVE SKILLS

KG	OUTSTANDING
PYP	OUTSTANDING
MYP	OUTSTANDING
DP	OUTSTANDING

PROVISION FOR LEARNERS

The quality of teaching is notably high in kindergarten, though it shows less consistency in other phases, affecting student engagement and critical thinking skills. Lesson planning is generally less focused, but its execution varies, especially in Islamic education, Arabic, and mathematics. The school's assessment processes are well-aligned with curriculum standards, offering key insights into student development, particularly in kindergarten.

The school's curriculum, robustly aligned with the IB philosophy and values, is especially strong in KG and PYP. It shows clear progression and continuity, backed by solid academic counselling for subject and career choices. There's flexibility to accommodate both MoE and IB requirements, though adaptations to meet individual student needs are uneven. The curriculum highlights enterprise, innovation, and UAE culture. Despite the introduction of alternative pathways, student participation is limited.

High importance is placed on safeguarding and child protection, underpinned by comprehensive staff training and stringent policies. The school actively fosters healthy lifestyles and maintains exemplary staff-student relationships, contributing to a caring and inclusive community atmosphere. While support for all student groups could be more consistent, the presence of dedicated well-being and counselling teams is notable. Students are provided with effective career guidance.



TEACHING	ASSESSMENT	CURRICULUM DESIGN
KG	OUTSTANDING	OUTSTANDING
PYP	VERY GOOD	OUTSTANDING
MYP	VERY GOOD	OUTSTANDING
DP	VERY GOOD	OUTSTANDING
CURRICULUM ADAPTATION	HEALTH & SAFETY	CARE & SUPPORT
KG	OUTSTANDING	OUTSTANDING
PYP	OUTSTANDING	OUTSTANDING
MYP	OUTSTANDING	OUTSTANDING
DP	OUTSTANDING	OUTSTANDING

INCLUSION

THE OVERALL PROVISION OF STUDENTS OF DETERMINATION IS **VERY GOOD**

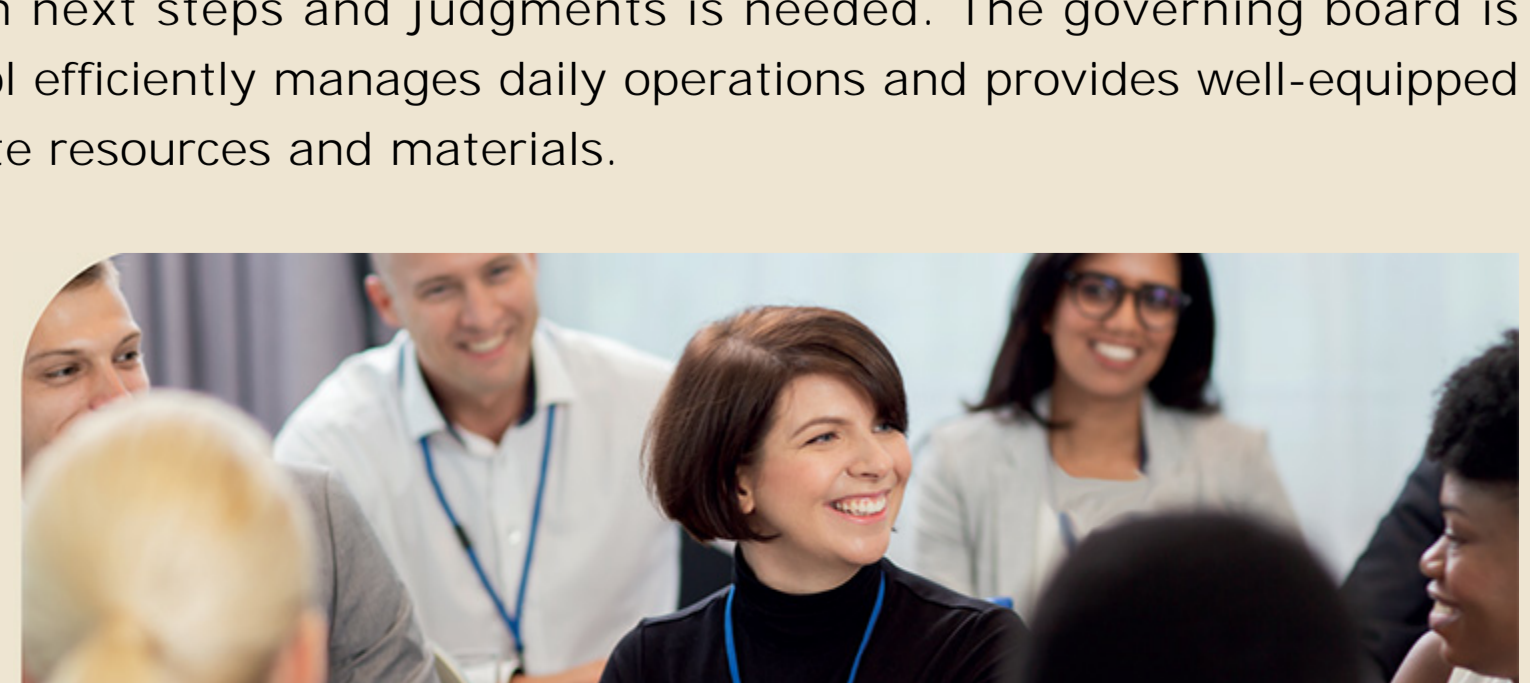
The school values inclusivity and effectively welcomes students of determination. They have well-designed facilities and resources. The inclusion lead oversees thorough assessments, and interventions are mostly effective but inconsistent. Parents provide, but teaching is yet to be most consistent in meeting their individual needs. Monitoring and responsive learning pathways are in place to address gaps in their development and qualifications.



LEADERSHIP AND MANAGEMENT

The school's leaders prioritise inclusive learning and well-being, offering coaching for new leaders and clear performance targets. However, challenges with new students require innovative solutions so all groups of students achieve well. Data is used for self-evaluation, but better alignment between next steps and judgments is needed. The governing board is committed to act as a critical friend. The school efficiently manages daily operations and provides well-equipped facilities for diverse student needs, maintaining up-to-date resources and materials.

THE EFFECTIVENESS OF LEADERSHIP	VERY GOOD
SCHOOL SELF-EVALUATION AND IMPROVEMENT PLANNING	VERY GOOD
PARENTS AND THE COMMUNITY	OUTSTANDING
GOVERNANCE	VERY GOOD
MANAGEMENT, STAFFING, FACILITIES AND RESOURCES	OUTSTANDING



[CLICK HERE TO ACCESS THE FULL INSPECTION REPORT FOR THIS SCHOOL](#)